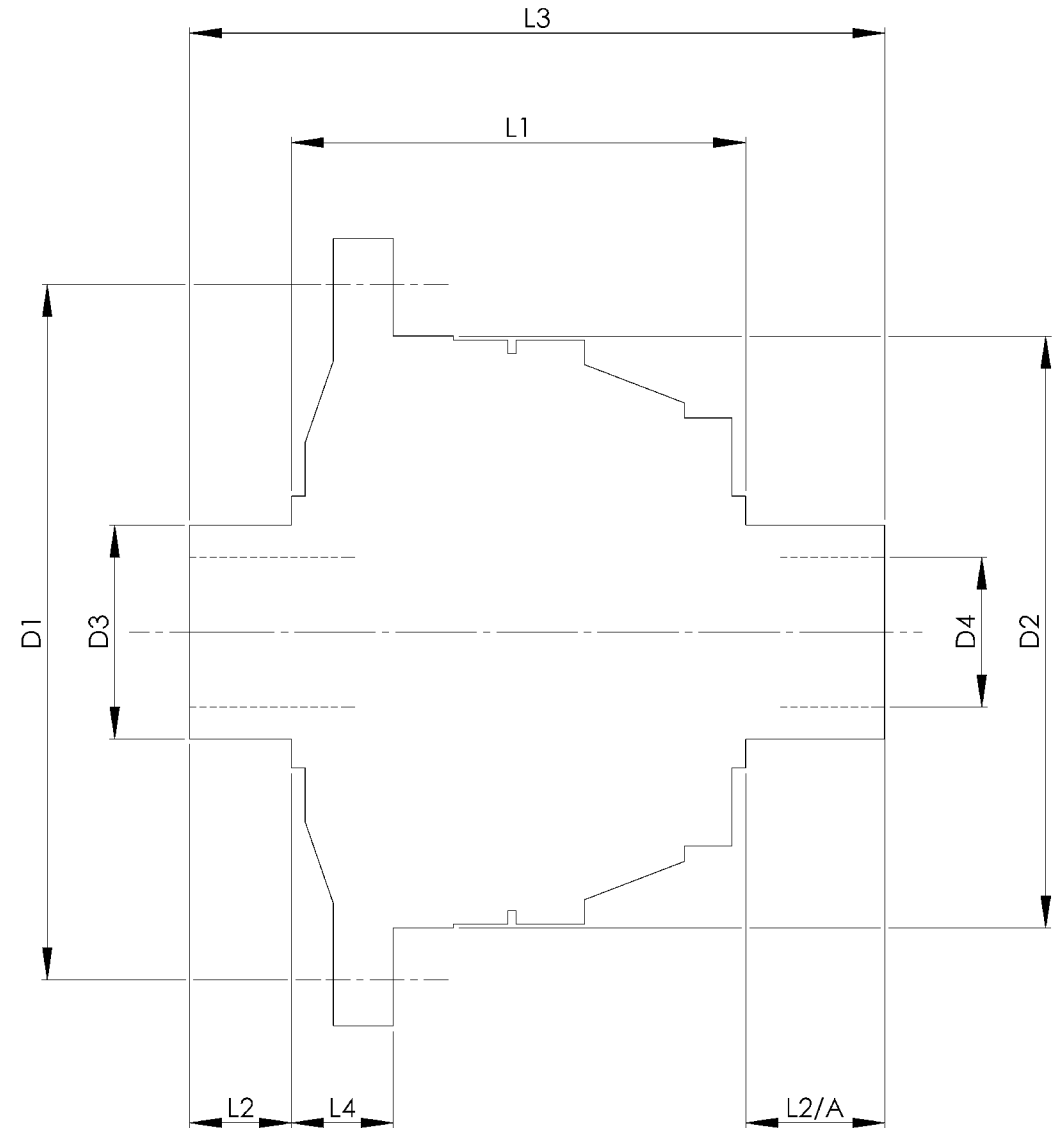


		INCH	MM
CROWN WHEEL BOLT PCD	D1	5.236	133
No. OF BOLTS		8	8
THREAD / THRO' HOLE		0.452	11.5
CROWN WHEEL SPIGOT DIA	D2	4.488	114.0
BEARING DIA	D3	1.6154	41.0
BEARING DISTANCE	L1	4.105	104.3
SPIGOT LENGTH	L2	0.740	18.8
	L2/A	0.740	18.8
OVERALL LENGTH	L3	5.585	141.9
BEARING/CROWN WHEEL	L4	0.827	21.0
BORE	D4	1.126	28.6
DRIVE SHAFT SPLINE:-			
No. OF TEETH		33	
PITCH		32/64 DP	
TYPE		FILLET ROOT	SIDE FIT
PRESSURE ANGLE		45 DEG	



TITLE F.W.D. DIFF DATA SHEET.
SCALE 1:1 U.O.S. SHEET 1 OF 1
<b>Drg. No.</b> QDF10R

**Quaife Design & Development.**

IF IN DOUBT, ASK.

THIS DRAWING OR DESIGN IS STRICTLY CONFIDENTIAL & THE COPYRIGHT THEREIN IS THE EXCLUSIVE PROPERTY OF QUAIFE DESIGN & DEVELOPMENT LTD. AND MAY NOT BE USED, COPIED OR REPRODUCED WITHOUT THE WRITTEN PERMISSION.

FINISH. MACH.	GRIND@G
LIMITS. FRACT. ± 1/64"	
DEC. ± 0.005"	
MATERIAL.	
TREATMENT.	
ISSUE. 01 DATE. 16.5.05	
DRAWN BY. M.L.M.	
<b>Used In.</b> VW GOLF MK3/4 (02J)	
WITH BOLT IN FLANGES.	