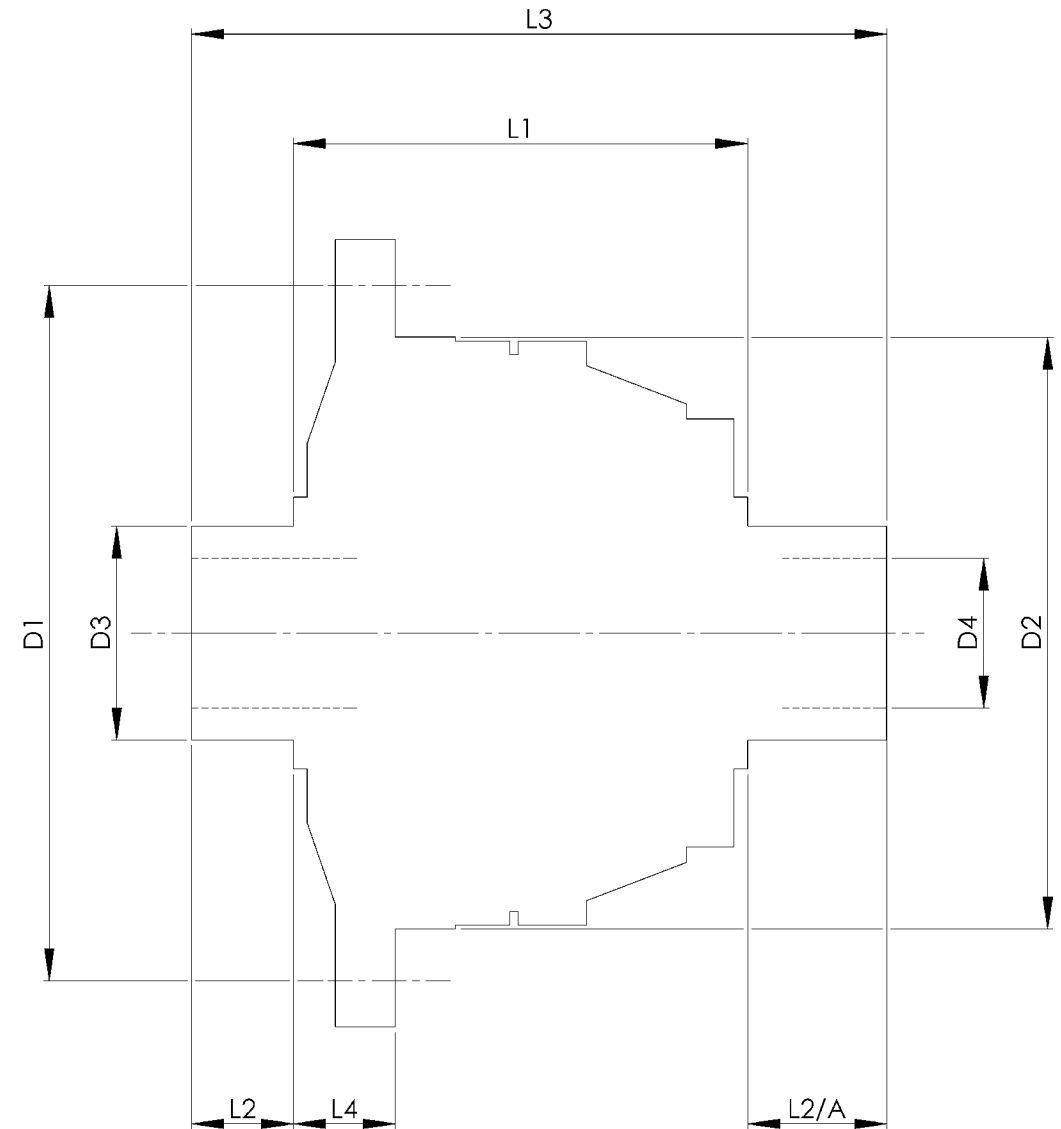


		INCH	MM
CROWN WHEEL BOLT PCD	D1	5.748	146
No. OF BOLTS		12	12
THREAD / THRO' HOLE		0.448	11.4
CROWN WHEEL SPIGOT DIA	D2	4.9234	125.0
BEARING DIA	D3	1.8126	46.0
BEARING DISTANCE	L1	5.055	128.4
SPIGOT LENGTH	L2	0.745	18.9
	L2/A	1.238	31.4
OVERALL LENGTH	L3	7.038	178.8
BEARING/CROWN WHEEL	L4	1.102	28.0
BORE	D4	1.2206	31.0
DRIVE SHAFT SPLINE:-			
No. OF TEETH		37	
PITCH		32/64 DP	
TYPE		FILLET ROOT	SIDE FIT
PRESSURE ANGLE		30 DEG	



TITLE F.W.D. DIFF DATA SHEET.

SCALE 1:1 U.O.S. SHEET 1 OF 1

**Drg. No. QDF13R**

**Quaife Design & Development.**

IF IN DOUBT, ASK.

THIS DRAWING OR DESIGN IS STRICTLY CONFIDENTIAL & THE COPYRIGHT THEREIN IS THE EXCLUSIVE PROPERTY OF QUAIFE DESIGN & DEVELOPMENT LTD. AND MAY NOT BE USED, COPIED OR REPRODUCED WITHOUT THE WRITTEN PERMISSION.

FINISH. MACH, GRIND@G  
 LIMITS. FRACT. ± 1/64".  
 DEC. ± 0.005".  
 MATERIAL.  
 TREATMENT.  
 ISSUE. 01 DATE. 23.5.05  
 DRAWN BY. M.L.M.  
**Used In.** VW 02M121D 2WD  
 (6 speed)