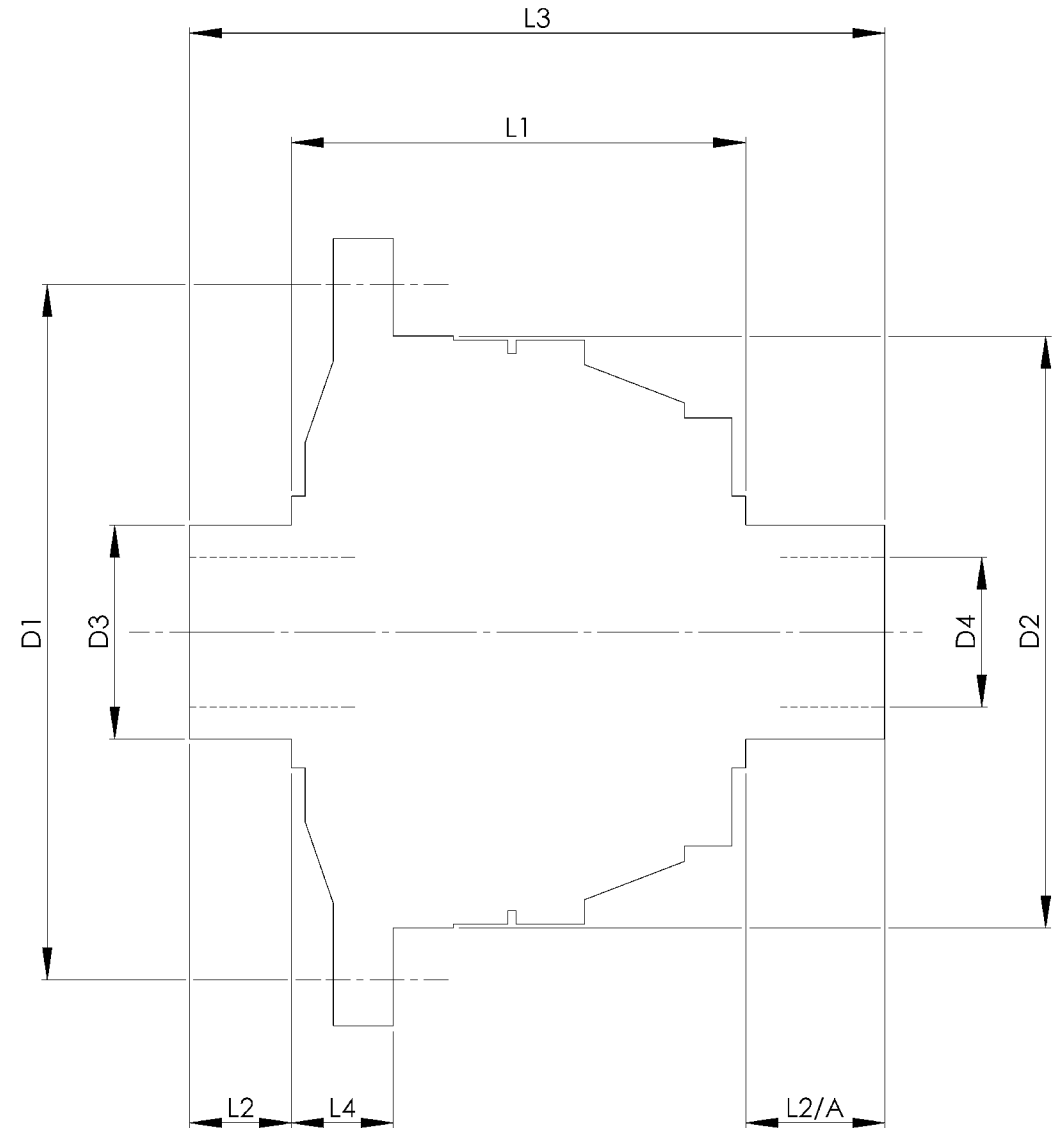


		INCH	MM
CROWN WHEEL BOLT PCD	D1	4.921	125
No. OF BOLTS		8	8
THREAD / THRO' HOLE		0.421	10.7
CROWN WHEEL SPIGOT DIA	D2	3.9768	101.0
BEARING DIA	D3	1.5018	38.1
BEARING DISTANCE	L1	4.650	118.1
SPIGOT LENGTH	L2	0.750	19.0
	L2/A	0.750	19.0
OVERALL LENGTH	L3	6.145	156.1
BEARING/CROWN WHEEL	L4	0.970	24.6
BORE	D4	1.1033	28.0
DRIVE SHAFT SPLINE:-			
No. OF TEETH		23	
PITCH		24/48 DP	
TYPE		FILLET ROOT	SIDE FIT
PRESSURE ANGLE		45 DEG	



TITLE F.W.D. DIFF DATA SHEET.
SCALE 1:1 U.O.S. SHEET 1 OF 1
Drg. No. QDF16Z

Quaife Design & Development.

IF IN DOUBT, ASK.

THIS DRAWING OR DESIGN IS STRICTLY CONFIDENTIAL & THE COPYRIGHT THEREIN IS THE EXCLUSIVE PROPERTY OF M.L.M. ENGINEERING. ANY UNAUTHORIZED REPRODUCTION OR USE OF THIS DRAWING WITHOUT THE WRITTEN PERMISSION OF M.L.M. ENGINEERING IS PROHIBITED.

FINISH. MACH.	GRIND@G
LIMITS. FRACT. ± 1/64"	
DEC. ± 0.005"	
MATERIAL.	
TREATMENT.	
ISSUE. 01 DATE. 18.5.05	
DRAWN BY. M.L.M.	
Used In. FORD ESCORT / SIERRA 6 1/2"	4x4 FRONT