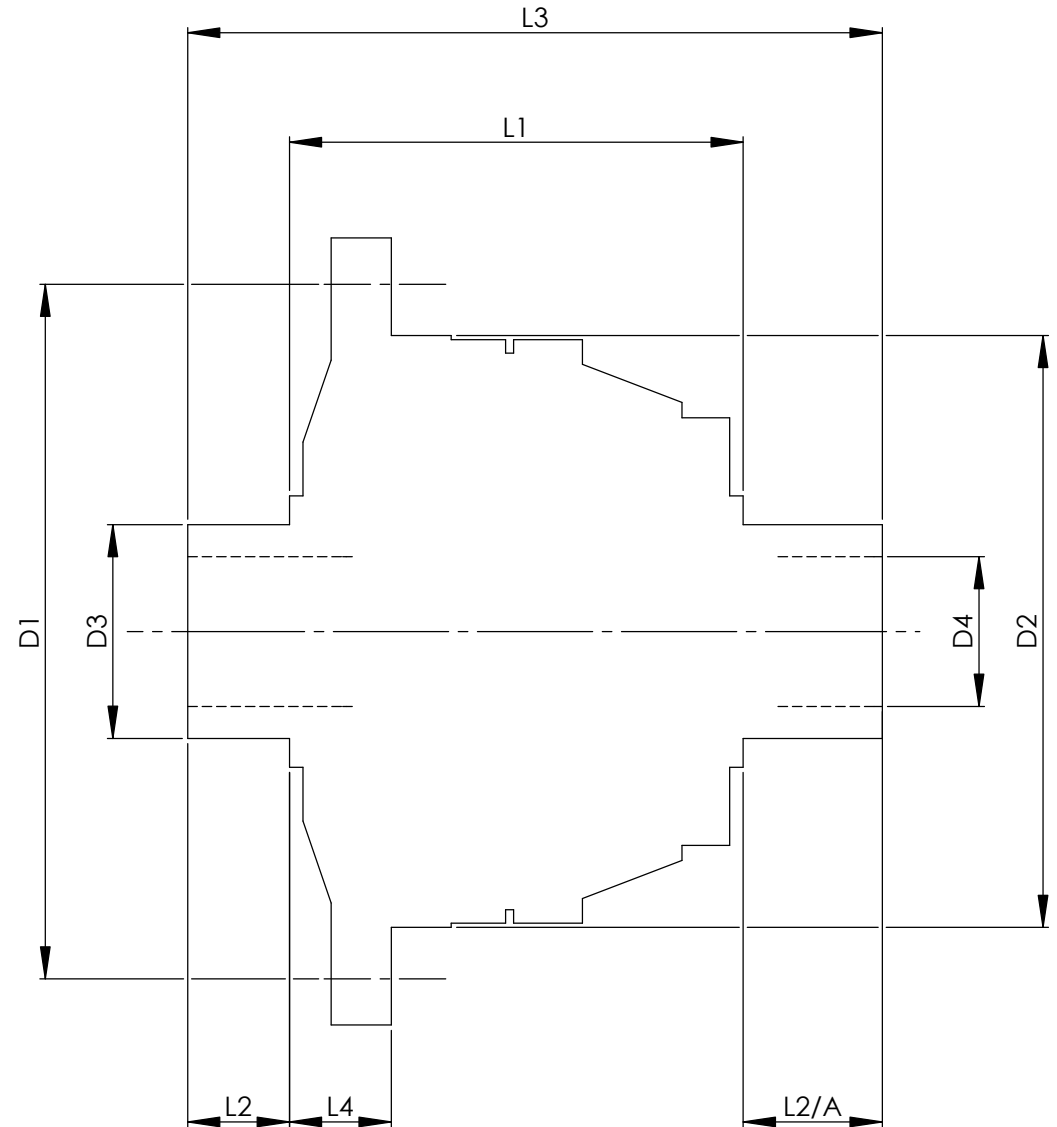


		INCH	MM
CROWN WHEEL BOLT PCD	D1	5.043	128
No. OF BOLTS		8	8
THREAD / THRO' HOLE		0.375	9.5
CROWN WHEEL SPIGOT DIA	D2	4.3700	111.0
BEARING DIA	D3	1.5018	38.1
BEARING DISTANCE	L1	3.318	84.3
SPIGOT LENGTH	L2	0.857	21.8
	L2/A	0.857	21.8
OVERALL LENGTH	L3	5.032	127.8
BEARING/CROWN WHEEL	L4	0.500	12.7
BORE	D4	1.1281	28.6
DRIVE SHAFT SPLINE:-			
No. OF TEETH		33	
PITCH		32/64 DP	
TYPE		FILLET ROOT	SIDE FIT
PRESSURE ANGLE		45 DEG	



TITLE F.W.D. DIFF DATA SHEET.
SCALE 1:1 U.O.S. SHEET 1 OF 1
Drg. No. QDF1R/16

Quaife Design & Development.

IF IN DOUBT, ASK.

THIS DRAWING OR DESIGN IS STRICTLY CONFIDENTIAL & THE COPYRIGHT THEREIN IS THE EXCLUSIVE PROPERTY OF RT SQUARE ENGINEERING LTD. AND MAY NOT BE USED COPIED OR EXHIBITED WITHOUT THEIR WRITTEN PERMISSION.

FINISH. MACH.	GRIND@G
LIMITS. FRACT. ± 1/64"	
DEC. ± 0.005"	
MATERIAL.	
TREATMENT.	
ISSUE. 01 DATE. 23.5.05	
DRAWN BY. M.L.M.	
Used In.	VW GOLF/JETTA/PASSAT/ SCIROCCO (020-Small L/wheel)