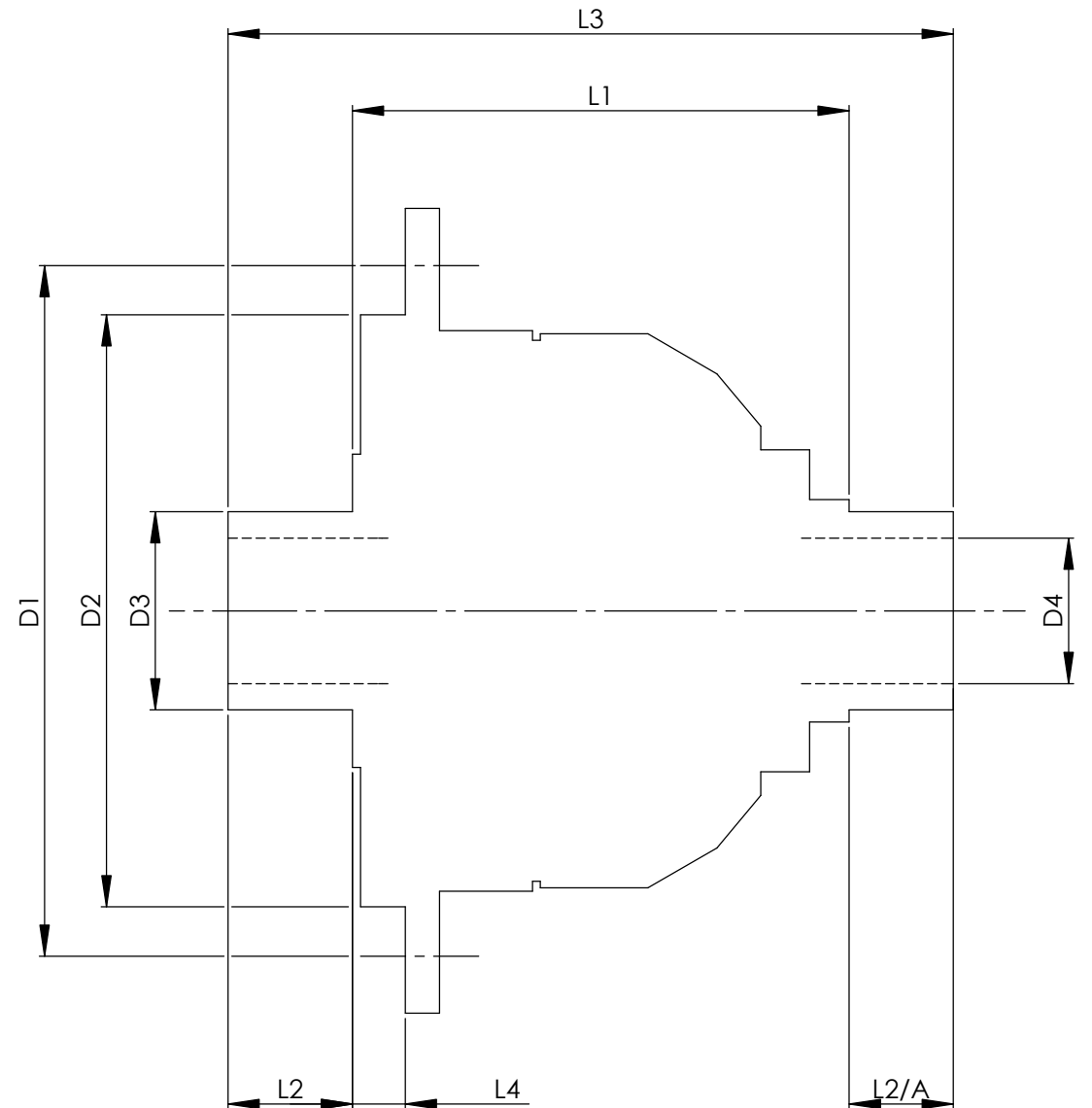


		INCH	MM
CROWN WHEEL BOLT PCD	D1	5.5118	140
No. OF BOLTS		8	8
THREAD / THRO' HOLE		0.445	11.3
CROWN WHEEL SPIGOT DIA	D2	4.6452	118.0
BEARING DIA	D3	1.5760	40.0
BEARING DISTANCE	L1	3.660	93.0
SPIGOT LENGTH	L2	0.850	21.6
	L2/A	0.842	21.4
OVERALL LENGTH	L3	5.352	136.0
BEARING/CROWN WHEEL	L4	0.330	8.4
BORE	D4	1.1025	28.0
DRIVE SHAFT SPLINE:-			
No. OF TEETH		20	
PITCH		20/40 DP	
TYPE			
PRESSURE ANGLE			



TITLE F.W.D. DIFF DATA SHEET.
SCALE 1:1 U.O.S. SHEET 1 OF 1
Drg. No. QDF21E

Quaife Design & Development.

IF IN DOUBT, ASK.

THIS DRAWING OR DESIGN IS STRICTLY CONFIDENTIAL & THE COPYRIGHT THEREIN IS THE EXCLUSIVE PROPERTY OF R.T. QUAIFF ENGINEERING LTD. AND MAY NOT BE USED COPIED OR EXHIBITED WITHOUT THEIR WRITTEN PERMISSION.

FINISH. MACH.	GRIND@G
LIMITS. FRACT. ± 1/64"	
DEC. ± 0.005"	
MATERIAL.	
TREATMENT.	
ISSUE. 01 DATE. 20.5.05	
DRAWN BY. M.L.M.	
Used In. TOYOTA CELICA/MR2 SPYDER (6 speed)	