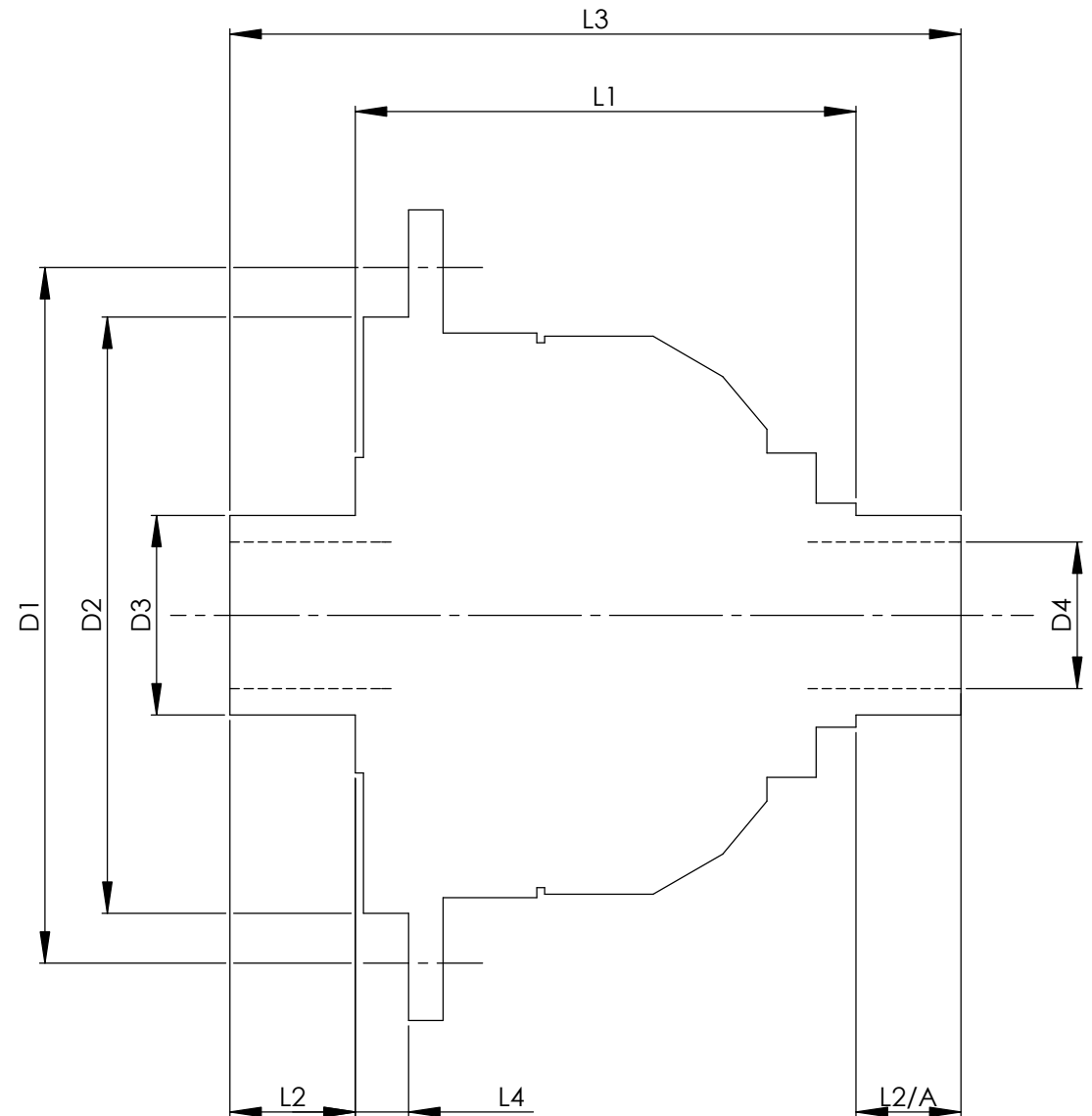


		INCH	MM
CROWN WHEEL BOLT PCD	D1	5.354	136
No. OF BOLTS		8	8
THREAD / THRO' HOLE		M10x1	M10x1
CROWN WHEEL SPIGOT DIA	D2	4.5672	116.0
BEARING DIA	D3	1.4968	38.0
BEARING DISTANCE	L1	3.938	100.0
SPIGOT LENGTH	L2	0.764	19.4
	L2/A	0.986	25.0
OVERALL LENGTH	L3	5.688	144.5
BEARING/CROWN WHEEL	L4	1.072	27.2
BORE	D4	1.0523	26.7
DRIVE SHAFT SPLINE:-			
No. OF TEETH		24	
PITCH		24/48 DP	
TYPE		FILLET ROOT	SIDE FIT
PRESSURE ANGLE		45 DEG	



TITLE F.W.D. DIFF DATA SHEET.

SCALE 1:1 U.O.S. SHEET 1 OF 1

**Drg. No.** QDF3H

A3(4)border

**Quaife Design & Development.**

IF IN DOUBT, ASK.

THIS DRAWING OR DESIGN IS STRICTLY CONFIDENTIAL & THE COPYRIGHT THEREIN IS THE EXCLUSIVE PROPERTY OF R.T. QUAIFF ENGINEERING LTD. AND MAY NOT BE USED COPIED OR EXHIBITED WITHOUT THEIR WRITTEN PERMISSION.

FINISH. MACH. GRIND@G  
 LIMITS. FRACT. ± 1/64"  
 DEC. ± 0.005"  
 MATERIAL.  
 TREATMENT.  
 ISSUE. 01 DATE. 17.5.05  
 DRAWN BY. M.L.M.

**Used In.** PEUGEOT 205/306/309Gti, 405 Mi16 (BE3 G/BOX), CITREON ZX (BE3 G/BOX)

SOLID WORKS