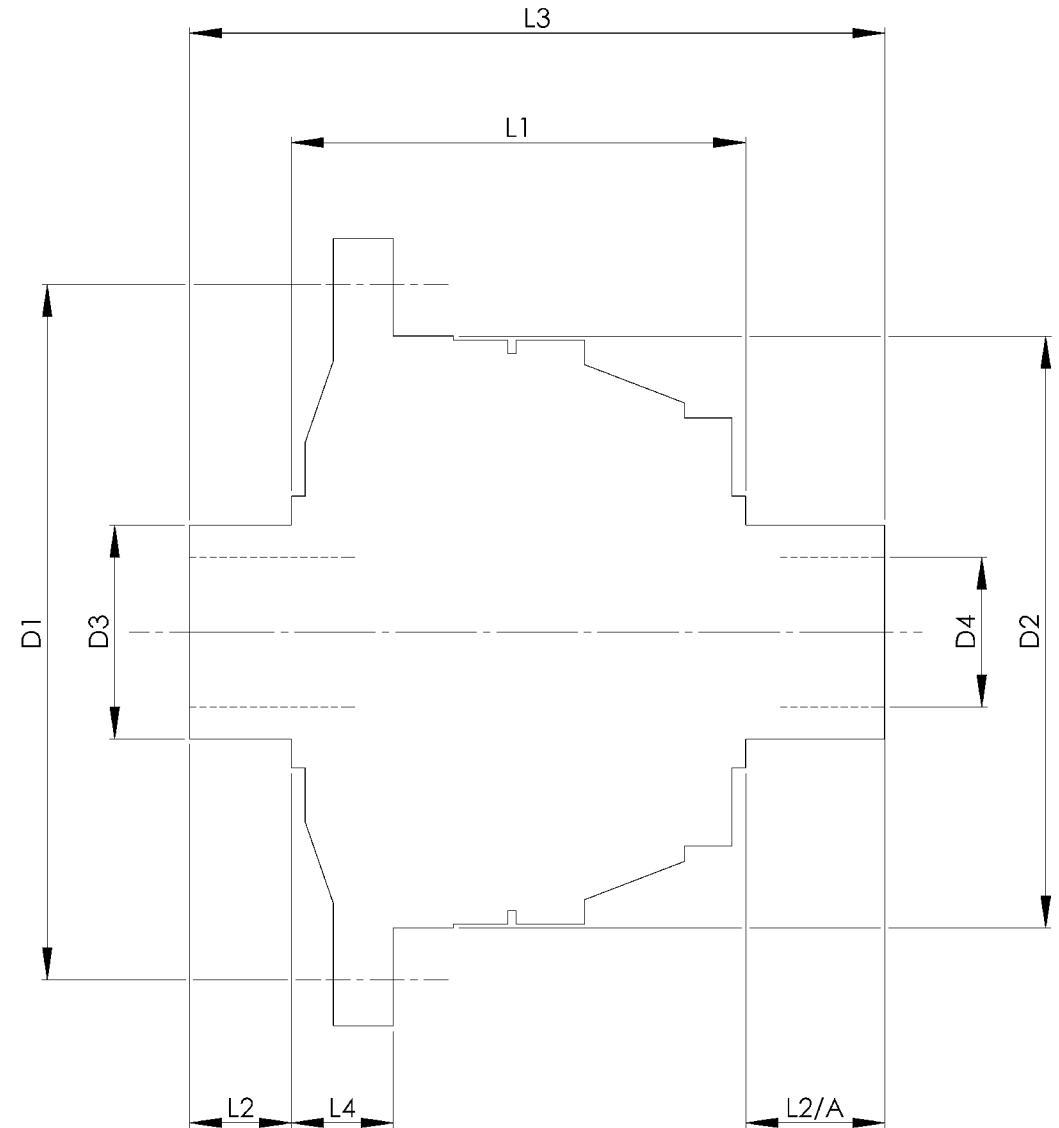


|                        |      | INCH     | MM       |
|------------------------|------|----------|----------|
| CROWN WHEEL BOLT PCD   | D1   | 4.921    | 125      |
| No. OF BOLTS           |      | 10       | 10       |
| THREAD / THRO' HOLE    |      | M10x1 LH | M10x1 LH |
| CROWN WHEEL SPIGOT DIA | D2   | 4.1732   | 106.0    |
| BEARING DIA            | D3   | 1.378    | 35.0     |
| BEARING DISTANCE       | L1   | 3.425    | 87.0     |
| SPIGOT LENGTH          | L2   | 0.825    | 21.0     |
|                        | L2/A | 1.098    | 27.9     |
| OVERALL LENGTH         | L3   | 5.348    | 135.8    |
| BEARING/CROWN WHEEL    | L4   | 0.535    | 13.6     |
| BORE                   | D4   | 1.0241   | 26.0     |
|                        |      |          |          |
|                        |      |          |          |
| DRIVE SHAFT SPLINE:-   |      |          |          |
| No. OF TEETH           |      | 25       |          |
| PITCH                  |      | 1 MOD.   |          |
| TYPE                   |      |          |          |
| PRESSURE ANGLE         |      | 37.5 DEG |          |
|                        |      |          |          |



TITLE F.W.D. DIFF DATA SHEET.

SCALE 1:1 U.O.S. SHEET 1 OF 1

**Drg. No. QDF4U**

**Quaife Design & Development.**

IF IN DOUBT, ASK.

THIS DRAWING OR DESIGN IS STRICTLY CONFIDENTIAL & THE COPYRIGHT THEREIN IS THE EXCLUSIVE PROPERTY OF B.L.S. (UK) ENGINEERING LTD. AND MAY NOT BE USED, COPIED OR REPRODUCED WITHOUT THE WRITTEN PERMISSION.

FINISH. MACH. GRIND@G  
 LIMITS. FRACT. ± 1/64".  
 DEC. ± 0.005".  
 MATERIAL.  
 TREATMENT.  
 ISSUE. 01 DATE. 18.5.05  
 DRAWN BY. M.L.M.

**Used In.** HONDA CIVIC/CRX (90-91) Si, plus non Si/Ex (88-99) 35mm Brgs