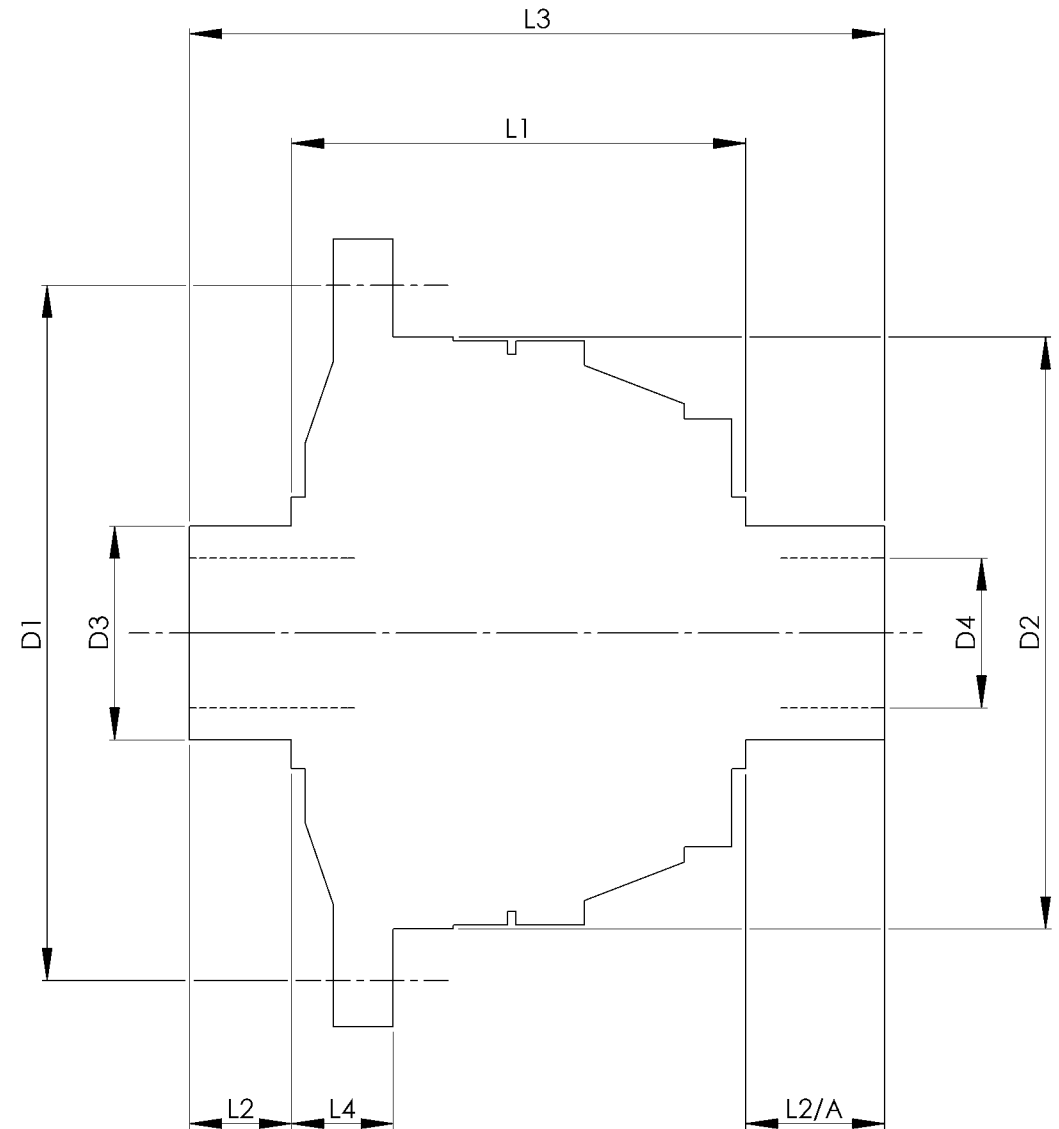


		INCH	MM
CROWN WHEEL BOLT PCD	D1	5.433	138
No. OF BOLTS		10	10
THREAD / THRO' HOLE		M10x1 LH	M10x1 LH
CROWN WHEEL SPIGOT DIA	D2	4.6063	117.0
BEARING DIA	D3	1.575	40.0
BEARING DISTANCE	L1	3.460	87.9
SPIGOT LENGTH	L2	0.810	20.6
	L2/A	1.080	27.4
OVERALL LENGTH	L3	5.350	135.9
BEARING/CROWN WHEEL	L4	0.708	18.0
BORE	D4	1.1031	28.0
DRIVE SHAFT SPLINE:-			
No. OF TEETH		27	
PITCH		1 MOD.	
TYPE			
PRESSURE ANGLE		37.5 DEG	



TITLE F.W.D. DIFF DATA SHEET.
SCALE 1:1 U.O.S. SHEET 1 OF 1
Drg. No. QDF6U

Quaife Design & Development.

IF IN DOUBT, ASK.

FINISH. MACH.	GRIND@G
LIMITS. FRACT. $\pm 1/64"$	
DEC. $\pm 0.005"$	
MATERIAL.	
TREATMENT.	
ISSUE. 01 DATE. 18.5.05	
DRAWN BY. M.L.M.	

THIS DRAWING OR THE DATA IT CONTAINS IS THE PROPERTY OF QUAIFF DESIGN & DEVELOPMENT. ALL RIGHTS RESERVED. NO PART OF THIS DRAWING OR THE DATA IT CONTAINS IS TO BE REPRODUCED OR TRANSMITTED IN ANY FORM OR BY ANY MEANS, ELECTRONIC OR MECHANICAL, INCLUDING PHOTOCOPYING, RECORDING, OR BY ANY INFORMATION STORAGE AND RETRIEVAL SYSTEM.

Used In HONDA ACURA INTEGRA GS-R
1994-2000, CIVIC Type R