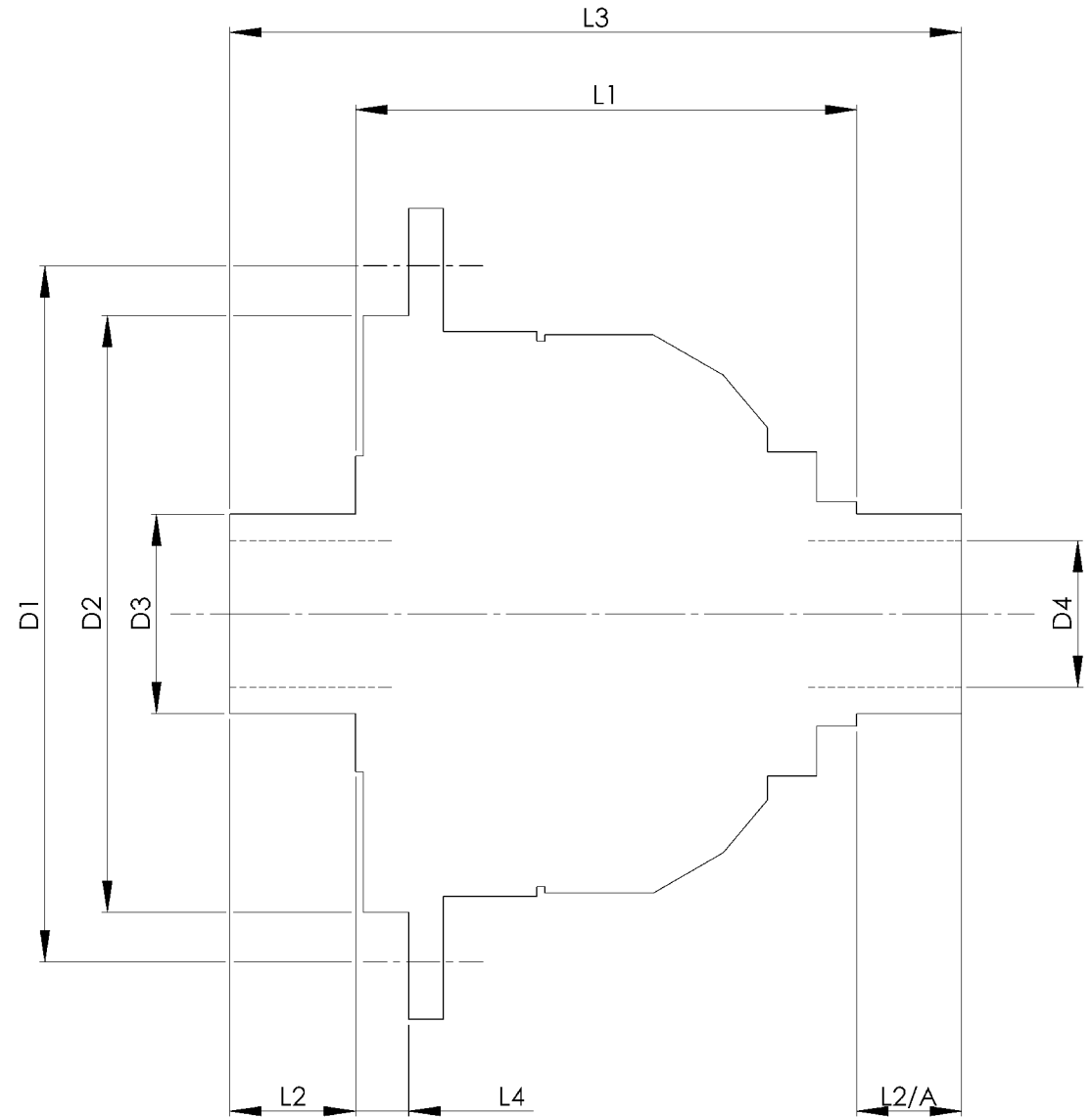


		INCH	MM
CROWN WHEEL BOLT PCD	D1	6.378	162
No. OF BOLTS		16	16
THREAD / THRO' HOLE		0.487	12.4
CROWN WHEEL SPIGOT DIA	D2	4.881	124.0
BEARING DIA	D3	1.9694	50.0
BEARING DISTANCE	L1	4.929	125.2
SPIGOT LENGTH	L2	0.878	22.3
	L2/A	1.008	25.6
OVERALL LENGTH	L3	6.815	173.1
BEARING/CROWN WHEEL	L4	1.110	28.2
BORE	D4	1.281	32.5
DRIVE SHAFT SPLINE:-			
No. OF TEETH		30	
PITCH		1 MOD.	
TYPE		FLAT ROOT	SIDE FIT
PRESSURE ANGLE		45 DEG	



TITLE F.W.D. DIFF DATA SHEET.
SCALE 1:1 U.O.S. SHEET 1 OF 1
Drg. No. QDF7F

Quaife Design & Development.

IF IN DOUBT, ASK.

THIS DRAWING OR DESIGN IS STRICTLY CONFIDENTIAL & THE COPYRIGHT THEREIN IS THE EXCLUSIVE PROPERTY OF M.L.M. ENGINEERING. IT IS TO BE KEPT IN STRICTLY CONFIDENTIAL AND NOT BE USED, COPIED OR REPRODUCED WITHOUT THE WRITTEN PERMISSION.

FINISH. MACH,	GRIND@G
LIMITS. FRACT. ± 1/64".	
DEC. ± 0.005".	
MATERIAL.	
TREATMENT.	
ISSUE. 01 DATE. 23.5.05	
DRAWN BY. M.L.M.	

Used In. MAZDA