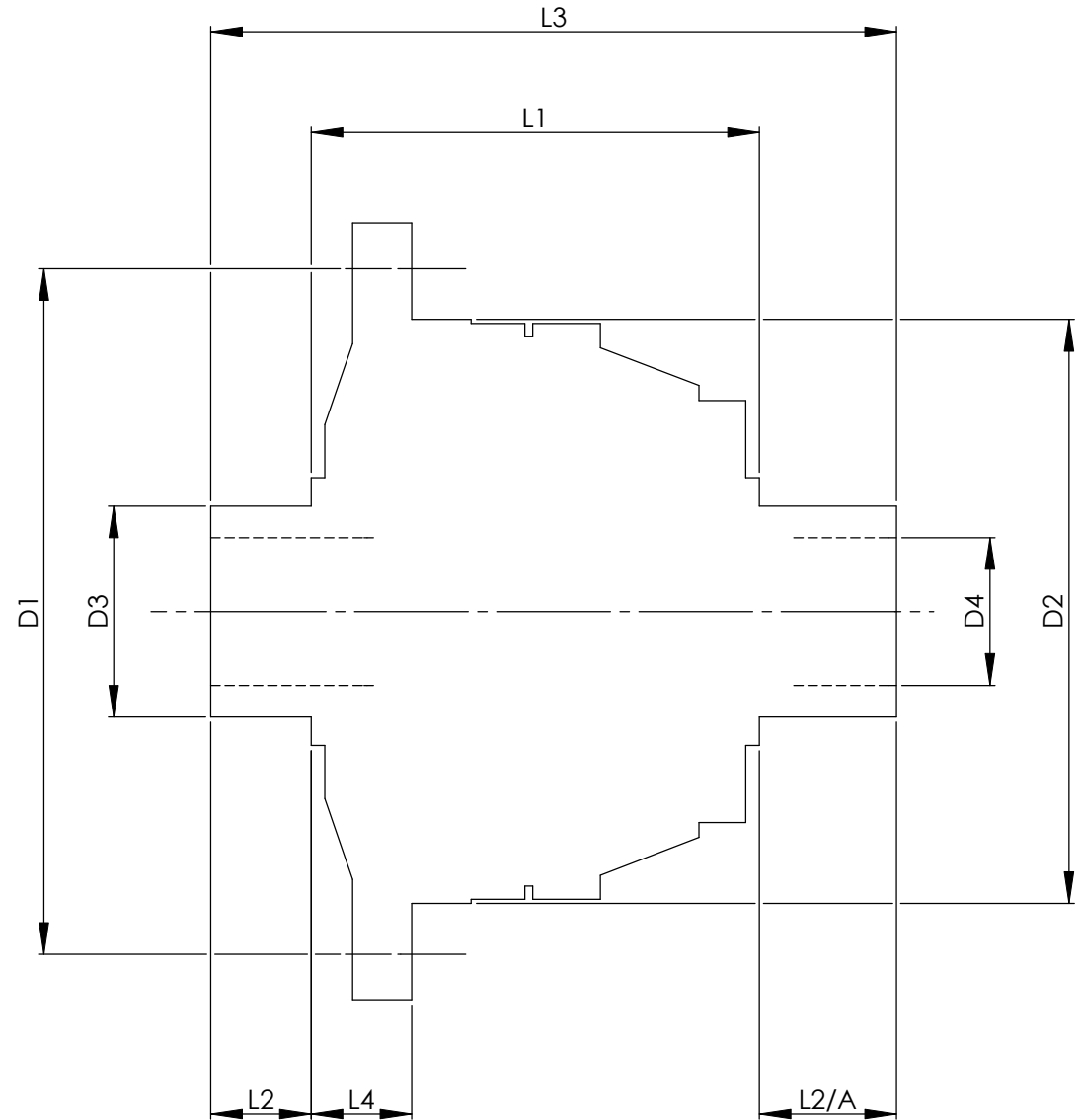


|                        |      | INCH        | MM       |
|------------------------|------|-------------|----------|
| CROWN WHEEL BOLT PCD   | D1   | 5.276       | 134.0    |
| No. OF BOLTS           |      | 10          | 10       |
| THREAD / THRO' HOLE    |      | 0.402       | 10.2     |
| CROWN WHEEL SPIGOT DIA | D2   | 4.252       | 108.0    |
| BEARING DIA            | D3   | 1.783       | 45.3     |
| BEARING DISTANCE       | L1   | 4.409       | 112.0    |
| SPIGOT LENGTH          | L2   | 0.787       | 20.0     |
|                        | L2/A | 0.787       | 20.0     |
| OVERALL LENGTH         | L3   | 5.984       | 152.0    |
| BEARING/CROWN WHEEL    | L4   | 0.827       | 21.0     |
| BORE                   | D4   | 1.181       | 30.0     |
| DRIVE SHAFT SPLINE:-   |      |             |          |
| No. OF TEETH           |      | 28          |          |
| PITCH                  |      | 1 MOD       |          |
| TYPE                   |      | FILLET ROOT | SIDE FIT |
| PRESSURE ANGLE         |      | 45 DEG      |          |



|          |                         |
|----------|-------------------------|
| TITLE    | R.W.D. DIFF DATA SHEET. |
| SCALE    | 1:1 U.O.S.              |
| SHEET    | 1 OF 1                  |
| Drg. No. | QDF9F                   |

**Quaife Design & Development.**

IF IN DOUBT, ASK.

THIS DRAWING OR DESIGN IS STRICTLY CONFIDENTIAL & THE COPYRIGHT THEREIN IS THE EXCLUSIVE PROPERTY OF R.T. QUAIFF ENGINEERING LTD. AND MAY NOT BE USED COPIED OR EXHIBITED WITHOUT THEIR WRITTEN PERMISSION.

|                |                   |               |
|----------------|-------------------|---------------|
| FINISH.        | MACH.             | GRIND@G       |
| LIMITS. FRACT. | ± 1/64"           |               |
|                | DEC. ± 0.005"     |               |
| MATERIAL.      |                   |               |
| TREATMENT.     |                   |               |
| ISSUE.         | 01                | DATE. 28.9.06 |
| DRAWN BY.      | H.R.              |               |
| Used In.       | MAZDA MX-5 (100D) |               |