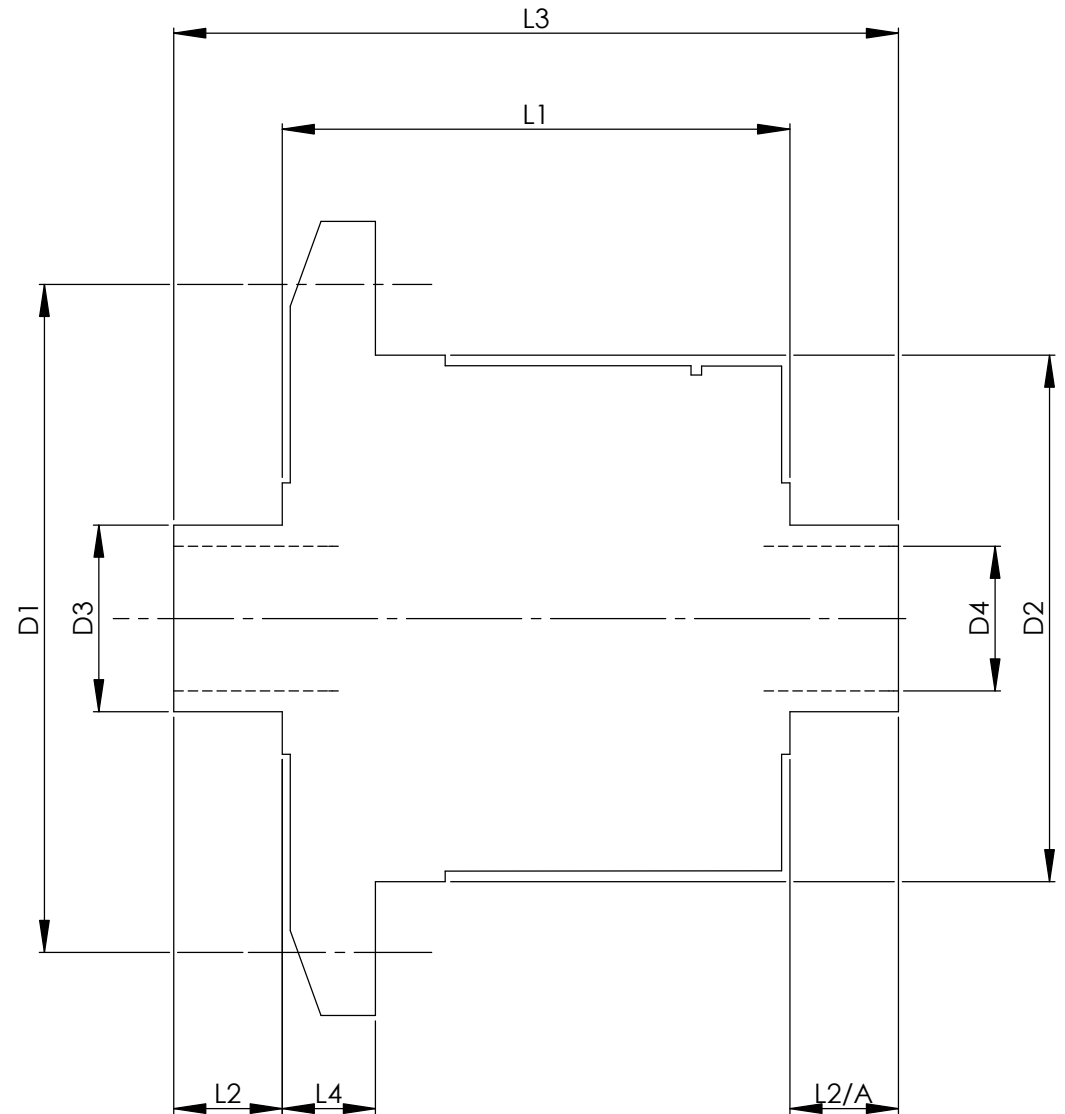


		INCH	MM
CROWN WHEEL BOLT PCD	D1	4.724	120
No. OF BOLTS		8	8
THREAD / THRO' HOLE		0.457	11.6
CROWN WHEEL SPIGOT DIA	D2	4.0152	102.0
BEARING DIA	D3	1.5760	40.0
BEARING DISTANCE	L1	3.938	100.0
SPIGOT LENGTH	L2	0.826	21.0
	L2/A	0.826	21.0
OVERALL LENGTH	L3	5.590	142.0
BEARING/CROWN WHEEL	L4	0.787	20.0
BORE	D4	1.1802	30.0
DRIVE SHAFT SPLINE:-			
No. OF TEETH		25	
PITCH		1 MOD.	
TYPE			
PRESSURE ANGLE		37.5	



TITLE R.W.D. DIFF DATA SHEET.
SCALE 1:1 U.O.S. SHEET 1 OF 1
Drg. No. QDH2Y

Quaife Design & Development.

IF IN DOUBT, ASK.

THIS DRAWING OR DESIGN IS STRICTLY CONFIDENTIAL & THE COPYRIGHT THEREIN IS THE EXCLUSIVE PROPERTY OF ST. QUARE ENGINEERING LTD. AND MAY NOT BE USED COPIED OR EXHIBITED WITHOUT THEIR WRITTEN PERMISSION.

FINISH. MACH.	GRIND@G
LIMITS. FRACT. ± 1/64".	
DEC. ± 0.005".	
MATERIAL.	
TREATMENT.	
ISSUE. 01 DATE. 20.5.05	
DRAWN BY. M.L.M.	
Used In.	SUBARU Impreza/Legacy (rear) not Sti (1993 - 2000)